

Knox & District Woodworkers Club



45 Glenfern Rd
Ferntree Gully 3156
Reg Assoc. A001761S

Club Phone (03) 9758 4849
Web Site www.alchester.com.au/kdwc

Executive Committee

President	Peter Sleeman	9758 1390
Vice President	Bruce Allen	9754 5774
Secretary	Charles Bruckner	9801 2197
Treasurer	Doug Dell	9729 1886
Committee Member	Paddy McCann	9758 3920
Newsletter Editor	Bob Plant	9754 5920

THE JULY MONTHLY MEETING HAS BEEN MOVED
FROM WEDNESDAY 4TH JULY TO TUESDAY 3RD OF
JULY

President's Report

It is May and another month has flown by. We had a great day at Moe with the Latrobe Valley Woodies. Approximately 20 members ventured down to the Heritage Village at Moe where they have their workshop. On arrival we were greeted by Harold Bagnall and Ken Morrison and made to feel most welcome. Everyone mixed well and got to know one another. We were shown around their clubrooms and workshops, which were most impressive and gave us some ideas for our own



workshop. It is great to be able to talk to other woodies and exchange ideas and experiences. A great BBQ lunch was had by all and it was nice to see the Knox Woodies win the raffle, even if it was drawn by yours truly! We finished about 3.00pm and made our way back to Ferntree Gully. I would like to thank Harold and Ken and the Latrobe Valley Woodies for a great day and look forward to return their hospitality.

One again I remind members about making toys for the Christmas Appeal. If you haven't started or want some ideas on what to make, see me for some ideas.

We wish Peter Horsburgh and David Howell a speedy recovery and look forward to see you back at the club soon.

A reminder to members to please use protective gear where appropriate, ie earmuffs, goggles, facemasks etc. and *please take care when using the machinery.*

Peter Sleeman

Around the Club

- ◆ It was good to see Peter Horsburgh back on his feet and back at the club over the past week. David Rowlands has not been in the best of health of late, he has made it to the club recently, but finds it difficult. We wish David well and look forward to him getting back into action
- ◆ **New culinary class to be offered !!!**
The Tuesday and Thursday day regulars have been treated to a morning tea extravaganza for some time thanks to one of our members, she shall remain nameless.
After some arm twisting, she has agreed to offer her skills to others. She plans to offer the class on Tuesday and Thursday at 9.15. To be

involved, meet at Safeway's on Burwood Highway.

- ◆ Doug and Coral Camps have just returned from a month in New Zealand. They spent considerable time looking at woodturning and gained some interesting insights. More from Doug at the next meeting.
- ◆ Jim and Jean Marshall are heading off on their annual pilgrimage to the northern winter. Jim spends some time at the Caloundra Woodworkers club where he has been made most welcome. He says it is tough but someone has to do it!!!
- ◆ On our recent trip to Moe, I hear a story of the antics of one of our party. While checking out the old hotel, she decided a glass (s?) of wine would be nice. While wandering the park, she found herself at a wedding ceremony and ended up being blown away ?????
- ◆ If you are interested in Jazz, then the New Melbourne Jazz Band lead by one of our members, Ross Anderson is having its Annual Concert on July 1st. For more information, for more information check the club notice board.

If you see any interesting happenings that would be suitable for "Around the Club" please pass them on the Newsletter Editor, or place them in the newsletter pigeon hole

Guest Speaker Next Meeting

The presenters for our next meeting will be Liz and Chris Potter from Pyrography on the Internet. Chris has designed, manufactured and successfully marketed his pyrography equipment. The equipment is all locally constructed by Chris and meets all Australian standards. Chris constructs all products.

Liz and Chris will be talking about pyrography and demonstrating their equipment, part of the program involves "hands on".

The club proposes to offer a half-day pyrography workshop on a Saturday after the demonstration. The cost will be \$22 per person with all equipment and material supplied, it will be limited to 14 participants.

More information will be available next newsletter.

Woodturner's Interest Group

Following the last monthly meeting, nine members interested in setting up a woodturning met the following Wednesday at the clubrooms. The following are the outcomes: -

- attending members thought it was a good idea and should be fostered

- it would develop a self help group and assist those interested in learning to turn
- a good means of exchanging information on equipment and materials
- the group would continue to meet on the 2nd and 4th Wednesday of each month
- the group would take over the maintenance of the woodlathes and associated equipment and liaise with the executive on equipment problems and updates
- it was suggested that members could use their own tools
- safety was important, and all would use full face helmets
- the early projects of the group would be to produce turned toys for the Christmas Appeal

If you are interested, come along on the nights or contact Bob Plant (9754 5920) for more information

New Members

We would like to welcome the following new members to the club: -

Hugh Williams

Bill Stafford

George Kendall

We now have a healthy membership of 131 members

"Be In It Day", What Is It?

"Be In It" is an important day in the clubs calendar. It is a day where members meet socially and display pieces of their work that they have completed over the past year. It has been part of the clubs activities since about 1995.

In many cases we never see a lot of the members completed projects as the work is carried out at home.

It is also a time where ideas, techniques and ways of carrying out tasks can be discussed.

This year it will be held on Sunday 12th August at the clubrooms and take the form of an afternoon tea with members to bring a plate. The afternoon will start at about 2.00pm with presentations at 4.00pm.

Entries can be left at the clubhouse from Friday the 10th and must be in before 1.00pm on the following Sunday. Judging will commence at 1.00pm and entries will not be received after it starts. members are able to enter multiple entries

Categories include: - furniture, carving, clocks, toys, rocking horses, woodturning including spindle turning, bowls platters, pens, boxes etc, A complete

INGRAINED

list of categories will be in the July edition of *Ingrained*.



For further information contact Paddy McCann. (9758 3920) or Sergio Meilak (9752 4126)

End of the year Breakup

Our end of the year breakup will be held on Sunday the 8th of December in conjunction with the Knox Christmas Carols.

To assist in the organisation of this activity, the committee is setting up a small team to run this function. If you can help contact Paul Phillips (9762 3829), your assistance would be much valued.

On Workshop & Safety Matters

- After seeing the effectiveness of an invisible sharpener in action on our trip to the Latrobe Valley Woodies, the club has purchased one for our machine room. The sharpener is designed to use when honing tools and is especially useful on woodturning tools. Care needs to be taken when using it, so it is important to be shown how. For this purpose there is a list of members on the sharpener, *please ask one of these "experts" to show you how* before you use it.
- In the near future the buzzer is going to be refurbished by Peter, so it will be out of action for a short while.

What is Happening at Amaroo ?

As mentioned in last month's newsletter some of our member's head off to Amaroo on Tuesday

June 2001



afternoons. Our roving reporter, Paul Aminde tells us more.

Every Tuesday, Bill Longdon, Colin Stewart, myself and some times, assisted by Chris Smith and Jeff Shaw go to the Amaroo Nursing Home (as visitors)

We work with the clients to help them assemble woodworking kits such as meal trays, pencil boxes, toolbox's and magazine racks. After constructing their kits, we then help them to paint them.

We work in their craft room that is quite well equipped with about ten clients, three female and seven male. They enjoy the time they spend with bus and always look forward to coming back next week.

Last Christmas the three of us were invited to the Nursing Home Christmas party as well as a special BBQ for us and our clients

Our time over there is both very enjoyable and also rewarding and our assistance is much appreciated by the staff and management of Amaroo.

Paul Aminde

Tassie's Trees (From Forestry Tasmania)

Leatherwood *Eucrphia lucinda*

The nectar from the leatherwood is used by bees to produce the famous Tasmanian leatherwood honey. The tree usually grows in rainforests underneath myrtle and cellery-top pine.

Leatherwood is a small to medium sized tree, it can reach 30 metres or more but more commonly is between 10 to 25 metres tall with a diameter of up to 60cms. It usually has a straight trunk with a deep compact crown. The colour of the bark ranges from green to a greyish brown, is smooth and often covered with lichen. The leaves are oblong with a round point, between 3 to 5 cms and 1 to 2cms wide. The young leaves and buds are covered with a clear orange (leather colour, hence the name) or brownish gum. the flowers appear on the joints



INGRAINED

of the upper leaves. The four large petals are usually white, but can also be pink and spread widely, up to 2cms in diameter. The large seeds are contained in a leathery capsule.

Leatherwood trees are epidemic to Tasmania and form part of the state's cool temperate rainforests. The heartwood is pink to brown with a straight grain and a fine uniform texture. It seasons well without distortion. The wood glues, nails, bends and polishes well and is used extensively by furniture makers.



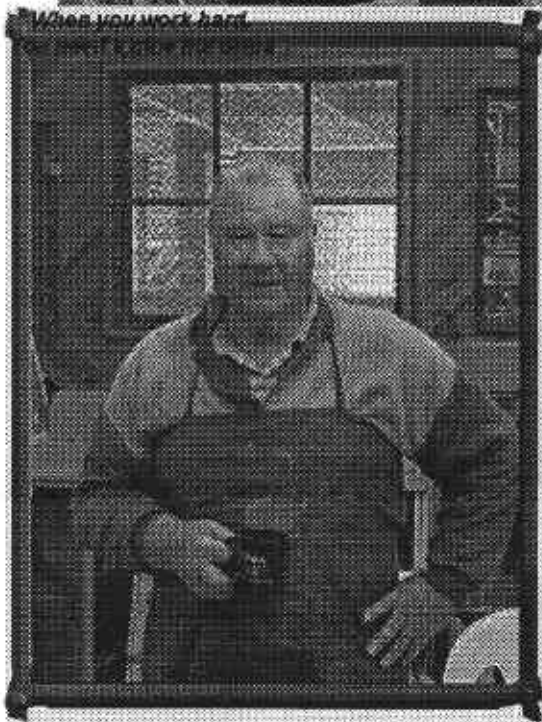
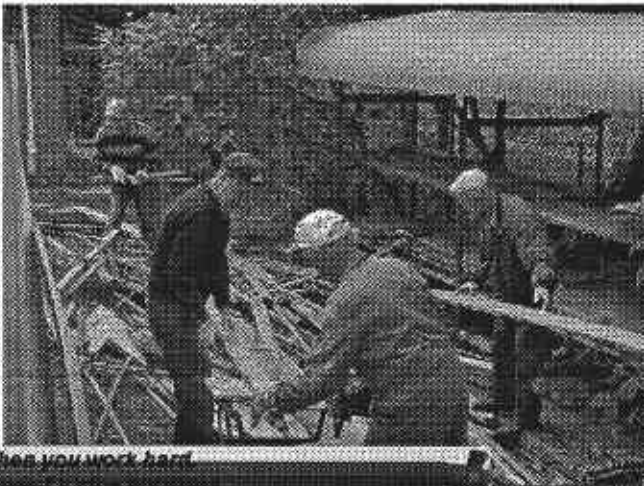
Working Bee

We had quite a successful working bee on Saturday 19th of May with 23 members attending.

The jobs carried out included: -

- cleaning the sanding room and stacking the materials
- cleaning the outside wood rack and fixing the shelves
- cleaning the club rooms and the machine shop
- painting the outside of the club house (still more to be done if you have any spare time)

It was great to see three of our new members helping out. Well done guys.



Workshop Hours

Monday	6.30 pm - 8.30 pm	Bill Longden	9758 2438
Tuesday	10.00 am - 3.00 pm	Peter Sleeman	9758 1390
	6.30 pm - 8.30 pm	Bruce Allen	9754 5774
Wednesday	10.00am - 3.00 pm	Peter Sleeman	9758 1390
	6.30 pm - 8.30 pm	Paddy McCann	9758 3920
Thursday	10.00 am - 3.00 pm	Paul Aminde	9758 1733
Friday	6.30 pm - 8.30 pm	Bruce Allen	9754 5774

Saturday	June 2nd	9.30 pm - 12.30pm	Doug Dell	9729 1886
	June 9 th	9.30 pm -12.30pm	Chris Smith	9729 6515
	June 16th	9.30 pm -12.30pm	Earl Webb	9801 4142
	June 23rd	9.30 pm -12.30pm	Jan Brown	9762 1063
	June 30th	9.30 pm -12.30pm	Reiner Lolkema	9754 4567
<i>Members please note: If no members have arrived by 10.30am the Key Holder has the option of closing the clubrooms</i>				

Coming Club Events

Wednesday June 6 th	Monthly General Meeting Presenter:- Chris Poole from Raw Woods in Abbotsford
Wednesday June 13 th	Woodturners at the club
Wednesday June 20 th	Executive Committee meets
Wednesday June 27 th	Woodturners at the club
<u>Tuesday</u> 3rd July.	Monthly General Meeting Presenters: - Liz & Chris Potter from Pyrography on the Internet.
Wednesday 1 st August	Monthly General Meeting Presenter to be advised
Sunday 12 th August	"Be In It" at the Club rooms
Wednesday 3 rd October	Annual General MEETING
Saturday 20 th & Sunday 21 st October	String Bark Festival
Saturday 8 th December	Christmas Break Up

Woodworking Calender

June 15 th 17 th	The Australian Woodturning Exhibition Waratah Room, Whitehorse Centre(rear of Council Chambers) 397 Whitehorse Rd. Nunawading
July 2 nd - 8 th	Winterfest at Warburton Exhibition, Competitions and Demonstrations Main St Warburton
July 22 nd	Melbourne Hand Tool Sale Glenferrie Primary School 80 Manningham St. Hawthorn
September 1 st & 2 nd	3 rd Biennial Mildura Wood Show Old Mildura Woodshed Cureton Rd. Mildura
October 5 th - 7 th	Maryborough Craft, Wood and Art Fair Nestle Centre Gillies St. Maryborough